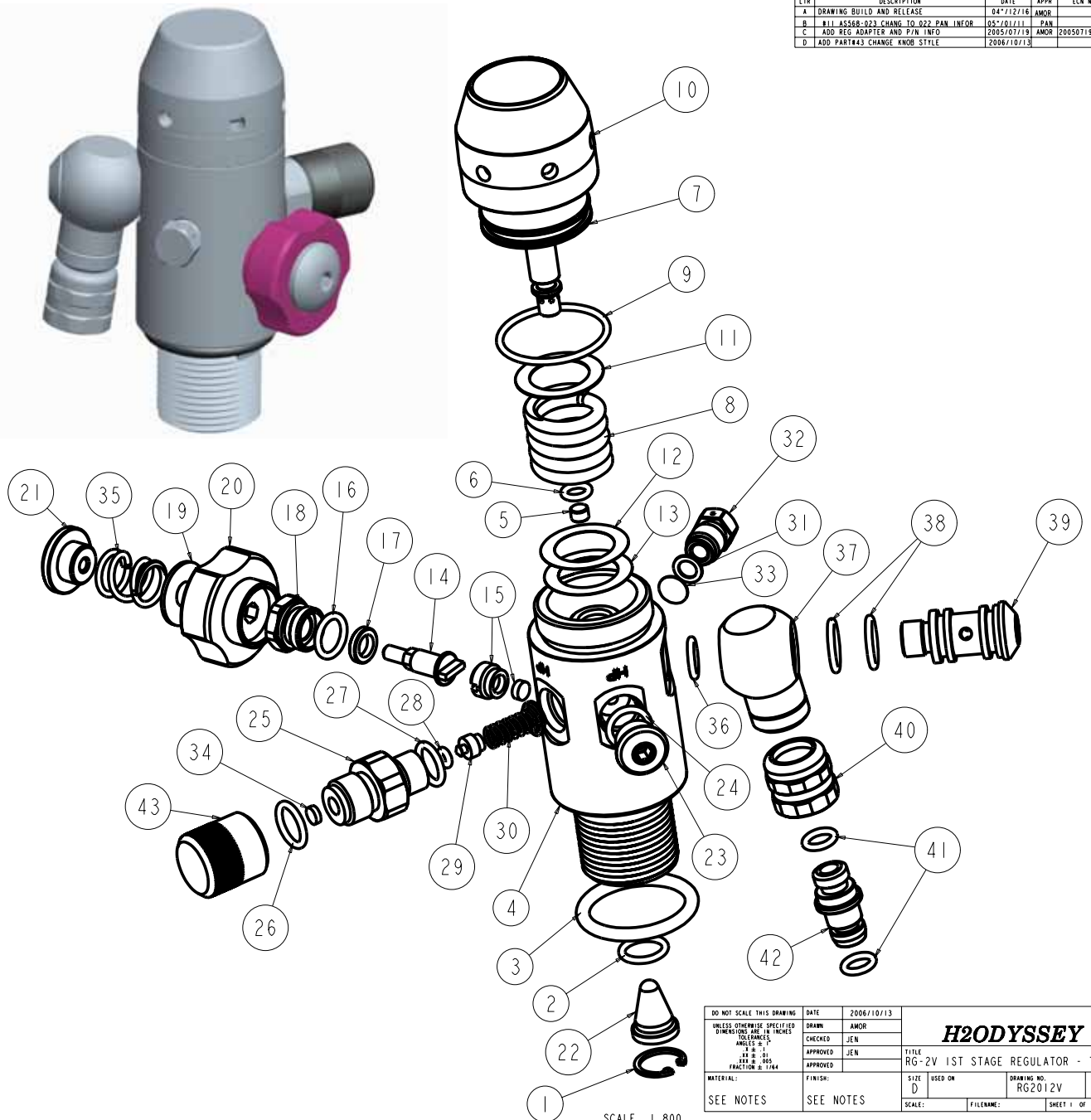


# RG-2V 1ST STAGE REG FOR TANK PART LIST

NO	PART NO	DESCRIPTION
1	RG2012V-01	SS CLIP
2	RG2012V-02	EKM 9.0 X 1.5
3	RG2012V-03	AS568-214-N90
4	RG2012V-04	MAIN HOUSING
5	RG2012V-05	HP SEAT
6	RG2012V-06	AS568-008-N90
7	RG2012V-07	PISTON
8	RG2012V-08	MAIN SPRING
9	RG2012V-09	AS568-022-N70
10	RG2012V-10	CAP
11	RG2012V-11	SHIM
12	RG2012V-12	SHIM
13	RG2012V-13	SHIM
14	RG2012V-14	SPINDLE
15	RG2012V-15	SEAT AND SEAT SCREW
16	RG2012V-16	AS568-012-N90
17	RG2012V-17	WASHER - SPINDLE
18	RG2012V-18	NUT SCREW
19	RG2012V-19	WASHER - SPRING
20	RG2012V-20	KNOB
21	RG2012V-21	NUT-SCREW-SPRING
22	RG2012V-22	FILTER
23	RG2012V-23	HP PLUG
24	RG2012V-24	AS568-012-N90
25	RG2012V-25	FILL ADAPTER
26	RG2012V-26	AS568-013-N90
27	RG2012V-27	AS568-012-N90
28	RG2012V-28	AS568-004-N90
29	RG2012V-29	O-RING SEAT
30	RG2012V-30	SPRING - FILL
31	RG2012V-31	BURST WASHER
32	RG2012V-32	BURST SCREW
33	RG2012V-33	BURST DISK
34	RG2012V-34	FILTER
35	RG2012V-35	SPRING
36	RG2012V-36	AS568-011-N70
37	RG2012V-37	SWIVEL BODY
38	RG2012V-38	AS568-013-N70
39	RG2012V-39	SWIVEL VALVE HOUSING
40	RG2012V-40	REG FEMALE SCREW
41	RG2012V-41	AS568-010-N70
42	RG2012V-42	INLET VALVE
43	RG2012V-43	FILL ADAPTER CAP



REVISION				
LTR	DESCRIPTION	DATE	APPR	ECN NO
A	DRAWING BUILD AND RELEASE	04/12/16	AMOR	
B	ALL AS568-023 CHANGE TO 022 PAN INFOR	05/01/17	PAN	
C	ADD REG ADAPTER AND P/N INFO	2005/07/19	AMOR	20050719-01
D	ADD PART#43 CHANGE KNOB STYLE	2006/10/13		

DO NOT SCALE THIS DRAWING		DATE	2006/10/13	DRAWN		AMOR
UNLESS OTHERWISE SPECIFIED DIMENSIONS ARE IN INCHES		CHECKED	JEN	APPROVED		JEN
TOLERANCES				APPROVED		JEN
ANGLES ± °				APPROVED		JEN
± .01				APPROVED		JEN
± .005				APPROVED		JEN
FRACTION ± 1/64				APPROVED		JEN
MATERIAL:		FINISH:		TITLE		H2ODYSSEY
SEE NOTES		SEE NOTES		REG-2V 1ST STAGE REGULATOR - TANK		
SCALE:		FILENAME:		SIZE		D
				USED ON		RG2012V
				REV		D
				SHEET		1 OF 1

SCALE 1:800