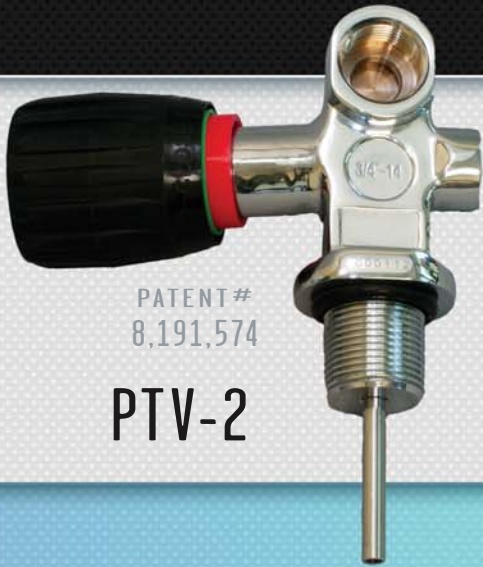




DIVE **H₂O** WRECK TO REEF **dyssey**



The Vindicator™ handwheel is the original and protected by patent number 8,191,574. Don't get caught with the imitation. The original color-coded handwheel that lets the diver and dive master know when the valve is on, or off.



PATENT #
8,191,574

PTV-2



Vindicator™ TANK VALVE

OFF
100%
RED

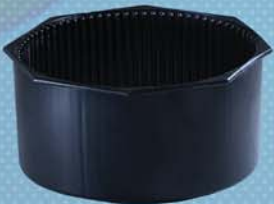


ON
100%
GREEN



Pro Valve

PTV-1



Tank Boot
PTB-7



Camband
PTB-3



Tank Valve Cover
PVC



PDC-2
ALUMINUM

Dust
Caps



PDC-3
PLASTIC

H2Odysey is proud to offer a full-range of Aluminum Cylinders. Our large Aluminum 80's are made by Worthington Cylinders at their state-of-the-art facility in New Albany, Mississippi. Worthington Cylinders has grown to become the leading global supplier of pressure tanks and cylinders.



Aluminum Tanks

- Lightweight, highstrength 6061-T6 alloy
- Service Pressure 3000 psi / 207 Bar
- Oxygen compatible provided that an O2 compatible tank valve be used.
- Colors:
 - AL80 = Black, Blue, SB
 - AL40 = Sand Blast, BNC
 - AL19 = Yellow
 - AL13 = Yellow
 - AL6 = Yellow

T80-SB

T6-Y

T13-Y

T19-Y

T40-BNC

America's first choice for redundant breathing systems

H2Odysey has been supplying the diving industry since 1986 and has built a solid reputation. In 2003, the Extra Air Source 1 was invented. Technical divers were the first to see the advantages of how the compact system could be used for their dry suit inflation systems.



EXTRA AIR SOURCE 3

- RG3V is a balanced diaphragm 1st stage w/environmental seal
- RG8 2nd stage connects via vertical/horizontal swivel
- Available in kits which include:
 - 1st & 2nd stage
 - 6 cuft tank
 - Yoke, DIN, or station filler
 - Quick release bag
 - GPD button gauge (optional)

EAS3-KY - Yoke fill kit

EAS3-KS - Station fill kit

EAS3-KD - Din Fill Kit



EXTRA AIR SOURCE 2

- RG2V is a standard piston 1st stage
- RG8 2nd stage connects via vertical/horizontal swivel
- Available in kits which include:
 - 1st & 2nd stage
 - 6 cuft tank
 - Yoke, DIN, or station filler
 - Quick release bag
 - GPD button gauge (optional)

EAS6-KY - Yoke fill kit

EAS6-KS - Station fill kit

EAS6-KD - Din fill Kit

RG-3V



Balanced Diaphragm

RG-2V



Standard Piston



EAS Tank Mount



EAS BC Mount



Store Display Available

Today the system has evolved into the Extra Air Source 2 with an on/off valve and the Redundant Air System. Both styles of systems are offered in a standard piston or balanced diaphragm first stage. These systems can be put on tanks as small as 6 cuft to a large, full sized AL 80.

- Our Magnum Air System is an environmentally sealed, balanced diaphragm 1st stage with a choice of two different 2nd stages.
- The Strata Air System has a standard piston 1st stage with a choice of two different second stages.
- Low pressure quick disconnect allows for detachment of hose and 2nd stage from 1st stage.
- Fits any standard aluminum, or steel tank
- Available in kits which include:
 - 1st & 2nd stage
 - 13 or 19 cuft tank
 - Station Filler
 - Secure tank mount bag (DB13 or DB19)
 - GPD Button Gauge (optional)

Magnum Air System

WITH RG3V 1ST STAGE

RAS3 - RG8 2nd Stage

RAS4 - RXO 2nd Stage *PICTURED



Strata Air System

WITH RG2V 1ST STAGE



RAS1 - RG8 2nd Stage *PICTURED

RAS2 - RXO 2nd Stage

The RAS system can be used with all tank sizes, which makes it the perfect system to be used by Public Safety Divers...

It is so easy to configure, it makes sense why so many professional divers use this instead of a traditional octopus.

From our redundant breathing systems to our low-profile Drysuit Inflation System, the RG2V has proven to be the desired choice for most diving professionals.

Drysuit Inflation System

Station Filler
EAS1-4



DIN Filler
EAS1-2



Yoke Filler
EAS1-3



ARGON-6



- RG2V Standard piston 1st stage
- 6 cuft tank
- Hose swivel
- LP OPRV
- Station, Yoke or DIN filler
- GPD button gauge (optional)
- PQDLP Quick Disconnect Hose for easy removal of 1st stage (optional)

Button Gauge



GPD - Standard HP
GPS - 1/2" Thread

HP

Quick Disconnects

LP



PHPH-QD

PQDLP

Our high performance Elite RXE regulator set is the perfect balanced piston regulator to take you to depth while maintaining excellent work of breathing characteristics. The Sprint RXL is a proven “workhorse” regulator with a balanced diaphragm 1st stage that is very easy to maintain.

RXE



Elite

- Balanced piston 1st stage -consistent airflow, regardless of depth
- Nitrox version available
- Available in Yoke / DIN
- 4 LP & 2 HP ports
- LP port swivel
- High performance balanced 2nd stage
- Diver adjustable inhalation resistance
- 30" black Rhino hose

Elite^{OCTO}

- High performance downstream 2nd stage
- Dive / Pre-dive switch
- 40" black Rhino hose

RXO



RXL



Sprint XL

- Balanced diaphragm 1st stage -consistent airflow, regardless of depth
- Nitrox Ready
- Available in Yoke / DIN
- 4 LP & 2 HP ports
- LP port swivel
- High performance 2nd stage
- Diver adjustable inhalation resistance
- 30" black Rhino hose
- CE EN250

Sprint^{OCTO}

- High performance downstream 2nd stage
- Dive / Pre-dive switch
- 40" black Rhino hose
- CE EN250

RSEO



Rhino Hose

- Durable braided low pressure hose
- TPU / Nylon / Polyester
- Working Pressure 1,500 psi
- Burst Pressure 6,000 psi
- Available in most popular sizes
- Colors (LP Reg): Yellow, Black, Green
- Colors (LP BCD): Black
- CE EN250

PA-9



Three port block

Standard LP/BC Adapter



PA-1

LP Quick disconnect



PQDLP

Scubapro LP/BC adapter



PA-2

HP quick disconnect



PHP-QD



PA-8

BC Horn



PV-5

AirNozzle



PAN-1

1st stage swivel



RP2-S



PT

Hose Protector Install tool



Hose Protectors

PHP2 1st stage
PHP3 2nd stage



On/Off valve

PA-7



MINI 2 GC5

Slimline^{SPG} GC1

- Nickel-plated brass
- Acrylic lens
- 0-5000 psi scale
- Size: 2" x .75"
- 30" black Rhino Hose



- 5000 psi
- 220'
- Compact design
- Easy to read
- GC6 features a compass on the reverse side
- 30" black Rhino Hose

MINI 3 GC6

Techline^{SPG}

- Chrome plated brass housing
- Tempered glass
- 0-5000 psi scale
- Size: 2.25" x 1"



GC1-G



Button Gauge

GPD 7/16" GPS 1/2"

High pressure Rhino Hose



- TPEE / Nylon fiber / Kevlar
- Working pressure 5,000 psi
- Burst pressure 22,000 psi
- Available in most popular sizes
- CE EN250
- Colors: Black

Wrist Mount

GWC



Hose Mount



GHM

COMPASS

Intrigue™



BC1

- Traditional jacket style
- 3D aircell expands away from the diver.
- Depth compensating cummerbund
- Adjustable sternum strap
- Weight intergration (25lbs)
- Low profile, molded backpack
- Removeable mesh weight pocket
- Sizes: XS, S, M, L, XL, XXL

FlitePac™



BC3

- Comfort-fit Harness
- 32lbs of buoyancy
- Weight integrated (25lbs)
- Adjustable sternum strap
- Single buckle waist
- One size fits most XS-XL
- 6.4 lbs Flite-Friendly

TravelPac™



BC4

- Comfort-fit Harness
- 25lbs of buoyancy
- Minimalist design
- Adjustable sternum strap
- Single buckle waist
- Travel stuff sack included
- One size fits most XS-XL
- 4.6 lbs Travel friendly

Venture 55



BC 7

- 55lbs of buoyancy
- 1080 Denier heavy duty nylon
- Can be purchased with Purist Harness, or without
- Patented internal compression system
- Designed as an aircell for doubles

Purist Harness



BC 9

- Stainless Steel Backplate 5.7lbs
- 15ft continuous 2" webbing with HD SS Hardware

SS & ALUMINUM Back Plate

PBP-SS | PBP-AL-K | PBP-AL-C



- AL BP's are available in Black or Clear
- SS BP's have an orange peel finish
- Designed for 2" webbing

COLDWATER 7MM

Catalina WSM7B

Men's 7mm

Coronado WSM8B

Men's 7mm Hooded

- All seams are double glued & blind stitched
- O-ring seals at ankle & wrist cuffs
- High grade zippers on ankles & wrists
- Back entry with rear zipper (WSM7B)
- Front entry with chest zipper & hood (WSM8B)
- Titanium Glideskin interior for easy on/off (WSM8B)
- *Sizes:* S, M, ML, L, XL, XXL



FULL SUITS



Maui WSM3

Men's 4/3

Baja WSM1

Men's 3/2

Santa Cruz WSW1

Women's 4/3

Child/Junior WSC1

Kid's 3/2

- All 4/3 seams are double glued & blind stitched
- All 3/2 seams are flat lock stitched
- Back entry with rear zipper
- O-ring seals at ankle & wrist cuffs to limit water movement
- YKK #10 zipper on back
- Ultrastretch panel under arms for enhanced performance
- *Sizes:*
WSM1 & WSM3: S, M, L, XL, XXL
WSW1: 6, 8, 10, 12, 14, 16
WSC1: 4, 6, 8, 10, 12, 14, 16
- *Colors:*
WSM1 & WSM3: Grey / Black, Blue / Black, Black / Black
WSW1: Purple / Black, Black / Black
WSC1: Blue / Black only

SPRING SUITS

Aruba WSM2

Men's 3/2

Fiji WSW2

Women's 3/2

Child/Junior WSC2

Kid's 3/2

- Our spring suits have the same quality features as our full suits with flat lock stitching.
- *Sizes:*
WSM2: S, M, ML, L, XL, XXL
WSW2: 6, 8, 10, 12, 14, 16
WSC2: 4, 6, 8, 10, 12, 14, 16

- *Colors:*
WSM2: Grey / Black, Blue / Black, Black / Black
WSW2: Purple / Black
WSC2: Blue/Black



Therma Grip



GK1
3mm

GK3
5mm

- Pull-on glove
- Sticky H2O Palm
- Velcro strap
- Sizes:
 - GK1: XXS - XXL
 - GK3: XS - XXL

Ultrazip



GK2
3mm

- Zippered glove
- Neoprene seal under zipper for less water movement
- Sticky H2O Palm
- Sizes: XS - XXL

Rhino



GK9
3mm

GK10
5mm

- Pull-on glove
- Durable Rhinoprene (Kevlar like) palm and fingers
- Velcro strap
- Sizes:
 - GK9: XS - XXL
 - GK10: XS - XL

Tropic



GK4
2mm

- Neoprene back
- Amara palm
- Velcro Strap
- Fingertips and palm are reinforced
- Sizes: XS - XL

Eskimo



GK5
6.5mm

- Lobster claw glove
- Extra long cuff
- Velcro strap
- Sticky PVC palm
- Our warmest glove!
- Sizes: M - XXL

Paddle Glove



- Printed Palm / Sticky PVC
- Velcro Strap
- Sizes: S - XL

GK6
2mm
Lycra back

GK8
2mm
Neoprene back

Endura

BK5 6.5mm
BK53 3mm



- Zippered boot
- Toe & heel cap
- Fin strap stop
- Sizes:
 - BK5: 4-15
 - BK53: 4-13

Ultrasole

BK1
5mm



- Zippered boot
- Extra hard, tennis shoe sole
- Toe & Heel cap
- Fin strap stop
- Sizes: 4 - 13

Cayman

BK6
3mm



- Low top boot
- Toe & heel cap
- Sizes: 4 - 13

Supra

- Zippered boot
- Available in 3 thicknesses
- Sizes:
 - BK2: 5 - 13
 - BK3: 4 - 15
 - BK4: 5 - 15



BK2
3mm

BK3
5mm

BK4
6.5mm

Monterey

HK1
5mm



- Double glued & blind stitched
- Smoothskin seal around face
- Sizes: S - XXL

Ultrasock

- Extra high ankle
- Velcro strap
- PVC Sole
- Sizes:
 - BK10: XS - XL
 - BK10-5: XS - XXL



BK10
3mm

BK10-5
5mm

Mini Sock

BK8
2mm



- New printed sole / fit
- For use with full foot fins
- Perfect for snorkeling
- Sizes: XS - XL

Andros

F7

F7J - Andros Junior



- Polypropylene blade
- TPR edges & foot pocket
- Sleek new design for maximum thrust with an easy kick
- Colors: Blue/Black, Silver/Black
- F7 Sizes: XS (3.5-5), S (5-6.5), M (6.5-8), ML (8-9.5), L (9.5-11.5), XL (11.5-13)
- F7J Sizes: JS (10-12), JM (13-1), JL (2-3)

Abaco

F5



- The Abaco can be used barefoot, or with a sock.
- Easy-Strap with QD buckles
- Sizes: S (4-7), M (7-10), L (10-13)
- Colors: Blue/Black, Silver/Black

Caicos

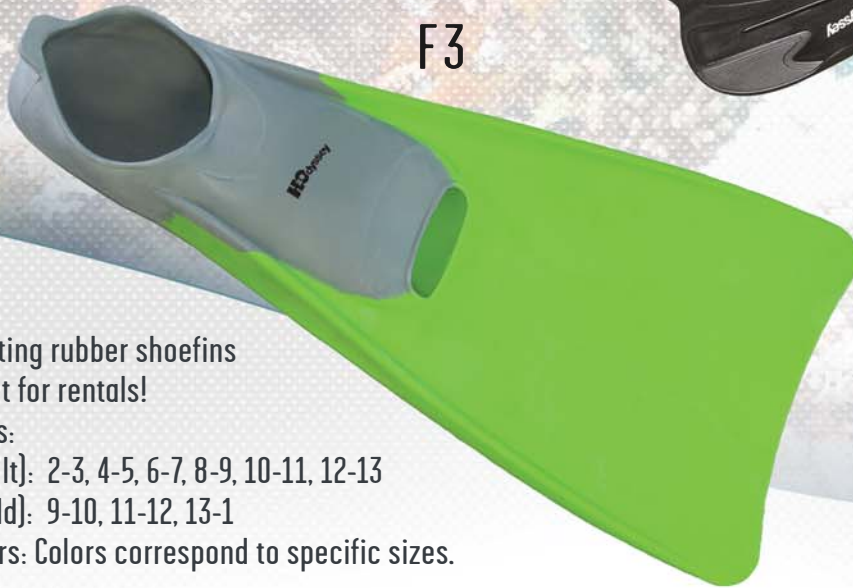
F12



- Polypropylene Blade
- TPR edges & foot pocket
- Slightly curved blade makes this fin efficient and comfortable
- Colors: Blue/Black, or Black/Black
- Sizes: XS (3-5), S (5-7), M (7-9), L (9-11), XL (11-13)

Flipper

F3



- Floating rubber shoefins
- Great for rentals!
- Sizes:
(Adult): 2-3, 4-5, 6-7, 8-9, 10-11, 12-13
(Child): 9-10, 11-12, 13-1
- Colors: Colors correspond to specific sizes.

F3-14

F3-12

F3-10

F3-8

F3-6

F3-4

F3-2

F3-C13

F3-C11

F3-C9



Eclipse

F13

- This fin has a sharp angled blade for power and efficiency
- TPR foot pocket & Polypropylene blade
- Straps & buckles available
- Colors: Blue/Black, or Black/Black
- Sizes: S (6-8), M (8-10), L (10-13)



Propel

F6

- The pre-curved blade on this fin allows maximum thrust without cramps
- TPR foot pocket with PP blade
- Heavy Duty, great for Dry Suits
- Thick rails give the blade extra power
- Easily adjustable straps with quick disconnect buckles
- Sizes: S/M (8-10), L/XL (11-13)



Thruster

F14

- TPR membrane bisects a polypropylene blade giving this fin power to the max!
- Comfort-fit foot pocket
- Colors: Blue/Black, Yellow/Black, Silver/Black
- Sizes: S/M (8-10), L/XL (11-13)



Aero

F10

- Smaller rails & sizing makes this a perfect fin for women and teens
- Comfort-fit footpocket
- Colors: Blue/Black, Yellow/Black, Silver/Black
- Sizes: S/M (4-6), ML/XL (7-9)



Stealth

F9

- Classic vented design
- Larger foot-pocket
- Negatively buoyant for dry suit use
- Optional Spring Strap
- Sizes: M (8-9), L (10-11), XL (12), XXL (13)



Turbofin

F4

- Turbo-Venturi design
- Large foot-pocket
- Negatively buoyant for dry suit use
- Spring Strap
- Sizes: XXL(10-11), XXXL (12-13)





Alpha 2
MS-7

- Very popular low volume mask
- Optional optical lenses from -1.5 to -8.0 and bifocal lenses from +1.0 to +4.0, all in increments of .5
- Available with purge
- Rental Style available
- Colors: Blue, Yellow, Green, Red, Pink, Clear, Black/Black, Black/Clear



Onyx/Glacier

MS-13BK
MS-13C

- Frameless 3 window mask
- Excellent peripheral vision
- Low Volume
- Available with purge
- Colors: Black or Clear



Alpha 4
MS-11

- 4 window mask for medium to large faces
- Optional optical lenses from -1.5 to -8.0 and bifocal lenses from +1.0 to +4.0, all in increments of .5
- Available with purge
- Colors: Blue, Clear, Black/Clear, Yellow



Odyssey 1
MS-12

- Medium size 1 window mask
- Easy to adjust buckles
- Available with purge
- Rental Style available
- Colors: Blue, Yellow, Green, Red, Black/Black, Black/Clear



Odyssey 3
MS-8

- Lightweight 3 window mask
- Fits medium to large faces
- Available with purge
- Colors: Blue, Clear, Black/Clear



Capri
MS-6

- Popular mask for children and juniors
- Available with purge
- Rental Style available with "Rental" printed on the frame.
- Colors: Blue, Yellow, Pink, Green, Black/Clear, Black/Black

Mask Box
AC1



- All H2Odyssey masks are packaged in this rugged mask box, great for storing your new mask!

Palau MS-17



- Large window mask offering a wide field of vision
- Push-button buckles allow for quick & easy strap adjustment
- Flexible buckle attachments that swivel with facial movements and absorbs shock, preventing buckle breakage
- Colors: Blue, Black/Black, Yellow

Bahia MS-19



- Great Medium to Large mask
- Outstanding peripheral vision
- Colors: Blue, Black/Clear, Yellow



Exuma MS-16

- Flexible buckle attachments that swivel with facial movements and absorb shock, preventing buckle breakage
- Colors: Blue, Black/Clear, Yellow



Onyx / Glacier

- Frameless mask
- Incredibly lightweight
- Colors: Black or Clear

MS-10C

MS-10BK

Kona MS-20

- Low volume 3 window mask
- Fits medium faces
- Colors: Blue, Black/Black, Clear, Yellow



Negril MS-5

- Single Lens, low volume mask
- Fits small to medium faces
- Colors: Blue, Black/Black, Clear, Yellow, Pink

Delta

MS-4

- Low volume
- Wide field of view
- Available optical lenses from -1.5 to -6.5, increments of .5
- Colors: Blue, Black/Black, Clear, Yellow, Pink



Omega MS-14

- Lightweight low volume
- Wide field of view, great for spearfishing
- Colors: Blue, Black/Black, Clear, Yellow, Pink

Aquacore SG-3

- Durable, wide eyed swim goggle with PC lens
- Colors: Blue only



Tortuga MS-18

- Children / Junior
- 3 Window mask
- Colors: Blue or Yellow



Prolite SG-2

- Swim goggles with polycarbonate, anti-fog lenses
- Colors: Blue with Smoke or Clear lens



Pro Stash

SS-7BK

ProStash Snorkel

SS-7BK-H

ProStash Holder

- Flexible folding snorkel
- Easily stows in BC or dry suit pocket
- Optional holder



Flexor 4

SS-4

- PVC Tube
- Silicone Mouthpiece
- Purge
- Colors: Blue, Clear, Yellow, Black/Black



Flexor 5

SS-5

- PVC Tube
- Silicone Mouthpiece
- Purge
- Colors: Blue, Clear, Yellow, Black/Black



Flexor 6

SS-6

SSD-6 Semi-Dry

- PVC Tube
- Silicone Mouthpiece
- Semi Dry Top SSD-6 only
- Colors: Blue, Clear, Green, Red, Yellow, Pink, Black/Black, Black/Clear



* NO GREEN OR RED IN SSD-6
* NO PINK IN SS-6

Flexor 1 Dry

SSD-1

- Our 1st COMPLETELY DRY SNORKEL
- Silicone mouthpiece
- Silicone Flex
- Removable mask strap clip
- Silicone Purge
- Colors: Blue, Clear, Yellow, Black/Clear



Cancun

SS-2

SS-3

JUNIOR ADULT

- Solid pre-formed PVC Tube
- Silicone mouthpiece
- Purge
- Semi-Dry
- Colors: Blue, Yellow, Black/Clear



- 210 Denier Nylon
- Oral inflator brass pressurization valve
- 2 adjustable straps
- WHISTLE INCLUDED

SVA ADULT

SVJ JUNIOR

SVC CHILD

Snorkel Vest



Shrimp

SP-2

CHILDREN'S

- PVC tube
- PVC mouthpiece
- Colors: Blue or Yellow

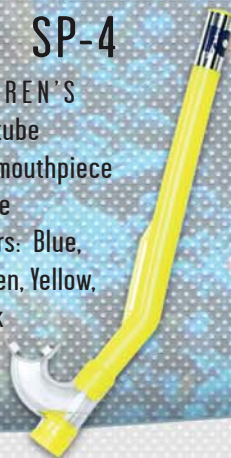


Urchin

SP-4

CHILDREN'S

- PVC tube
- PVC mouthpiece
- Purge
- Colors: Blue, Green, Yellow, Pink



Neptune

SP-3

- PVC tube
- PVC mouthpiece
- Purge
- Colors: Blue, Yellow, Black/Black



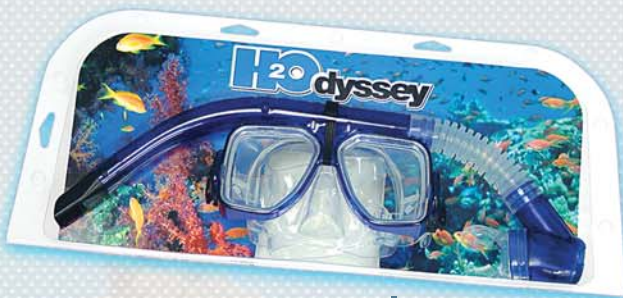
Aristo

SP-5

- PVC tube
- PVC mouthpiece
- Purge
- Colors: Blue, Black/Black, Yellow



ADULT



COMBO set 1

C 1

Alpha 2 Mask (MS-7)
Flexor 6 Snorkel (SS-6)
Colors: B, C, Y, G, K



COMBO set 2

C 2

Odyssey 1 Mask (MS-12)
Flexor 6 Snorkel (SS-6)
Colors: B, Y, G, K



COMBO set 3

C 3

Alpha 2 Mask (MS-7)
Neptune Snorkel (SP-3)
Colors: B, Y, K



COMBO SET 4

C 4

Odyssey 1 Mask (MS-12)
Neptune Snorkel (SP-3)
Colors: B, Y, K



COMBO set 10

MASK & SNORKEL
NOT SOLD SEPARATELY

C 10

2 Window Mask
Flex Semi-Dry Snorkel
Colors: B, Y, K

CHILD



COMBO set 7

C 7

Children's PVC Mask & Snorkel Set
Colors: Blue only
Mask & Snorkel not sold separately



COMBO set 5

C 5

Capri Mask (MS-6)
Urchin Snorkel (SP-4)
Colors: B, Y, G, P

- Large lightweight wheeled bag ONLY 7.5LBS.
- Durable Dynatec nylon
- Contrasting inner lining so you can see your stuff.
- Incognito appearance, doesn't look like a dive bag.

THE ROADTRIP DB-1

- Fully padded main compartment
- Three front internally expanding pockets
- Inside Fin sleeve
- Tarpulin changing mat in side panel
- 7.5 lbs. Travel Friendly



GOBI DRI BAG DB-4

- Completely dry duffel
- RF welded no sewn seams
- 840D double coated nylon
- 40 liter capacity

KANGAROO DB-2

- Mesh Snorkeling bag
- Shoulder straps
- Inner dry pocket



KANGAROO DELUXE DBD-2

- Constructed with heavy duty materials for dive gear
- Shoulder straps
- Inner dry pocket
- Large outer pocket
- Folds inside its own carrying case

MESH BAG DB-3

- Heavy duty mesh bag
- Drawstring cord
- 18" X 26"



TITAN BC



K3

- 3" blade
- Titanium - won't rust
- Colors: Black, Blue, Yellow

MAKO

- 4" blade
- K4 Titanium - won't rust
- QD Straps included
- Color: Black



K4 TITANIUM
K8 420 SS



K9

THRESHER

- 3" Blade
- 420 Stainless steel
- Colors: Black, Blue, Yellow

TIGER

- 4" blade
- 420 Stainless steel
- Straps included
- Colors: Black or Blue



K5 POINT
K6 BLUNT

TITAN RIDGE



K7

- 3.5" blade
- Titanium - won't rust!
- Folds & locks
- Clips on back

TITAN

- 4" blade
- Titanium - won't rust
- Straps included
- Colors: Black, Clear, Yellow



K1 POINT
K2 BLUNT



SCISSORS
PLS



DRI-POUCH



ORONASAL MASK
PCPR



PFF



PFF-2



PSPD



REG NECKLACE

PRN - 62CM
PRNL - 72CM

SS WATER BOTTLE



PWB



PFB



PSP



PMC



3-HOSE
PC-3



2-HOSE
PC-2



PR-1

OCTO HOLDER
PMH-2



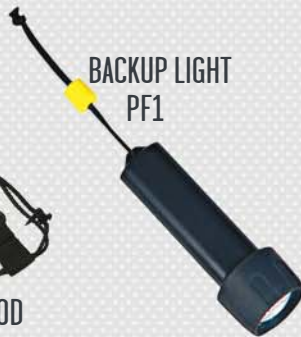
WHISTLE
PWC



PDR-5 50FT.
PDR-3 100FT.
PDR-4 150FT.



DIVE TOOL
PDT



BACKUP LIGHT
PF1

DRI POD
PDC



TANK BANGER
PTB

WRIST SLATE
PWS



PWS-7



PL1



PMS-9



PLB-1
70 LBS.



PLASTIC HANGER
PH-1



PLASTIC
DUST CAP
PDC-3



ALUMINUM
DUST CAP
PDC-2



PVC



POT



PS-3



PS-1



PS-2



PS-5



PB-1
SS



PB-2
DEPTH COMPENSATING



PB-3
PLASTIC



2" WEBBING



1" TUBULAR WEB



PSAK



PAN-4



PAN-5



PT-3



PT-4



PT-2



PT-7



PG-1



PV-2



PV-1



PR-2



PR-3



PB-4
Forged SS



PR-5



PR-4



PB-5



SS SNAP-BOLTS

- PSB-4 1 1/4"
- PSB-3 1 1/8"
- PSB-2 1"
- PSB-1 3/4"



PR-9 PR-8

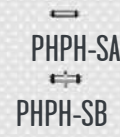


PR-7 PR-6



DOUBLE ENDS

- PSB-5 3 1/2"
- PSB-6 4"



PHPH-SA
PHPH-SB



VITON O-RINGS, most sizes



PE-1DIN - DIN TRANSFILL WHIP



PA-5



PA-6



PG-2D



PG-2Y



LP HP
PT-1



PV-4



PAN-2



PV-3

H2O Gas Analyzers



Oxygen Analyzer OA

- On/Off/On with backlight
- Splash proof ABS case with o-ring seal
- Built in Flow Restrictor
- Temperature Range 32-122F (0-50C)
- Fast Response time with long life sensor
- Measurement Range 0.1-100% O2
- Comes with convenient storage case
- Simple to change battery and sensor
- Battery life: 18-24 months
- Replacement Sensor: OAS

Oxygen Sensor OASR



- 7to 11mV +/- oxygen sensor with 6 second response time.
- Replacement Sensor for OxySpy
- Long-lasting
- Not recommended for Rebreather use.



Oxygen Sensor OAS

- Replacement sensor for H2O, DeepOutdoors, Abysmal TekChek, RC Dive Spectrum Pro-1
- Most durable analyzer cell to date.
- Not recommended for rebreather use.

Trimix Expedition Analyzer OA2

- Fast response, accurate and long life sensor
- Easy to read dual display
- NiMH rechargeable batteries
- Waterproof plastic case
- Solidstate HE sensor
- Long life Teledyne "D-13" style H2O sensor.
- Simply the easiest and most dependable O2/HE analyzer available today.



975 Park Center Dr.
Vista, CA 92081

H2ODYSSEY.COM 800 999 0019